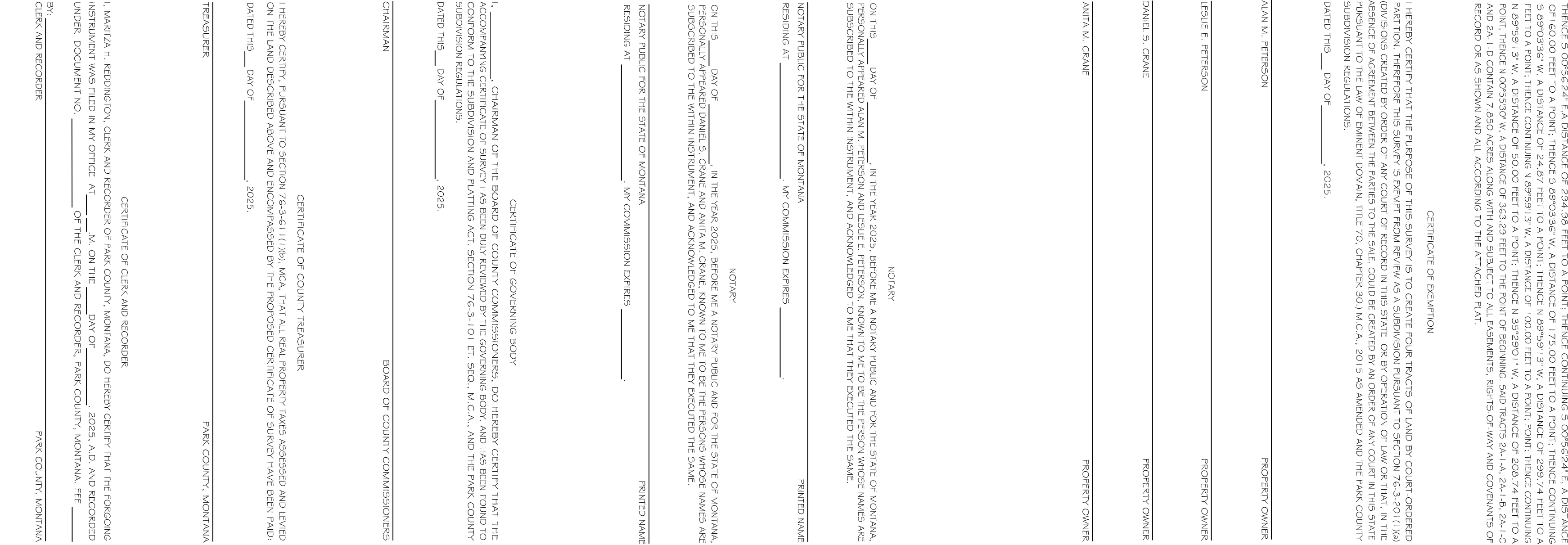


BOUNDARY DESCRIPTION
BEING ALL OF TRACT 2A-1 AS SHOWN ON C.O. 5, 2164 AND LOCATED IN THE
SHIPSHIP 2 NORTH, RANGE 9 EAST, PRINCIPAL MERIDIAN MONTANA, AND BEING

POINT OF BEGINNING COMMENCES AT THE NORTHWEST CORNER OF PARCEL 2A-1, C.O.S. 2164, 195, 89E, P.M.M., PARK COUNTY, MONTANA; THENCE N 88°55'18" E, A DISTANCE OF 321.01 FEET TO A POINT; THENCE S 85°55'41" E, A DISTANCE OF 31.56 FEET TO A POINT; THENCE S 00°56'24" E, A DISTANCE OF 60.79 FEET TO A POINT; THENCE CONTINUING S 00°56'24" E, A DISTANCE OF 1.00 FEET TO A POINT; THENCE CONTINUING S 00°56'24" E, A DISTANCE OF 63.67 FEET TO A POINT; THENCE CONTINUING



T	R		C/S	CERTIFICATE OF SURVEY NO.
2N	9E		PARK COUNTY, MONTANA	SHEET 1